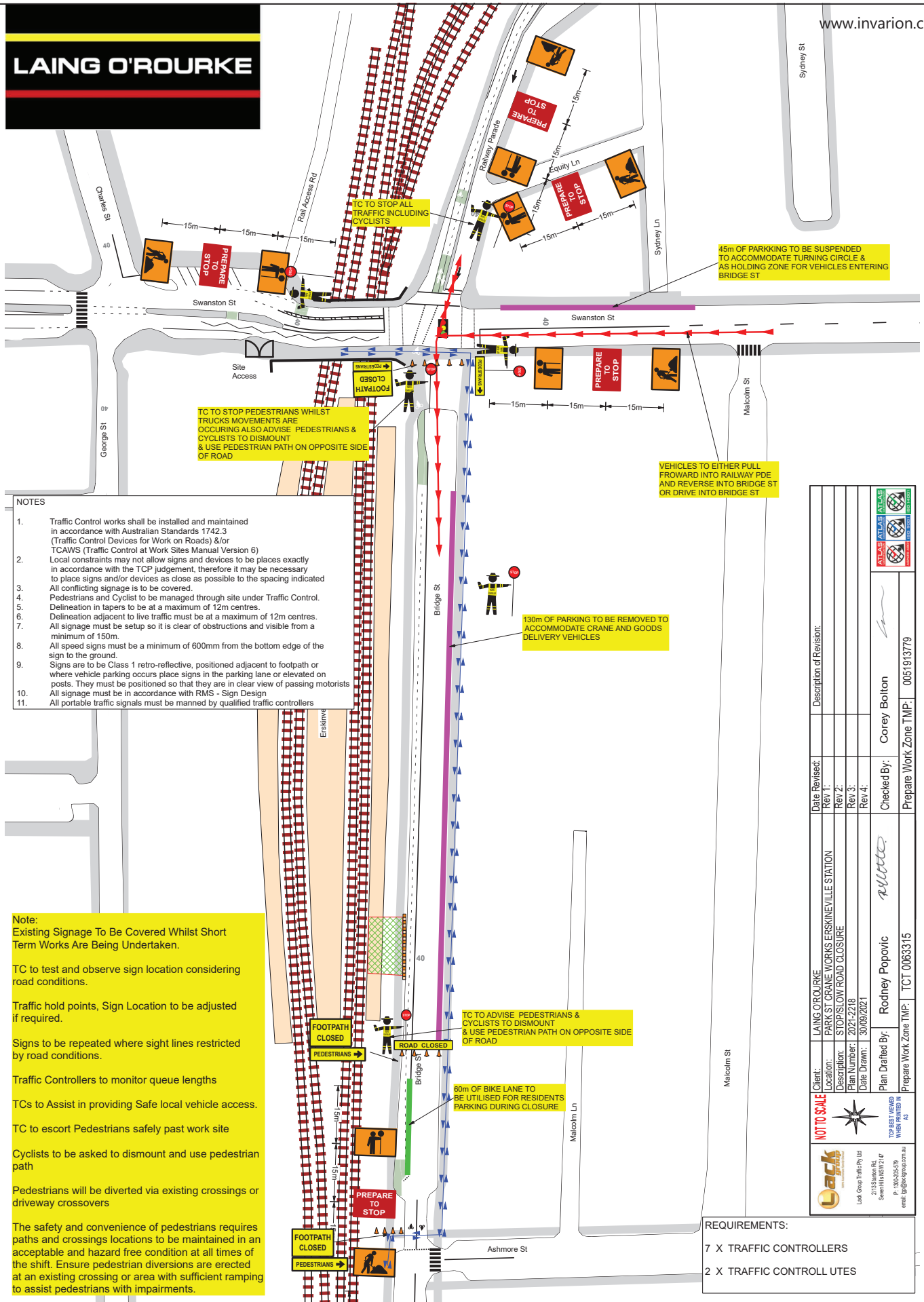


LAING O'ROURKE



NOTES

- Traffic Control works shall be installed and maintained in accordance with Australian Standards 1742.3 (Traffic Control Devices for Work on Roads) &/or TCAWS (Traffic Control at Work Sites Manual Version 6)
- Local constraints may not allow signs and devices to be placed exactly in accordance with the TCP judgement, therefore it may be necessary to place signs and/or devices as close as possible to the spacing indicated
- All conflicting signage is to be covered.
- Pedestrians and Cyclist to be managed through site under Traffic Control.
- Delineation in tapers to be at a maximum of 12m centres.
- Delineation adjacent to live traffic must be at a maximum of 12m centres.
- All signage must be set up so it is clear of obstructions and visible from a minimum of 150m.
- All speed signs must be a minimum of 600mm from the bottom edge of the sign to the ground.
- Signs are to be Class 1 retro-reflective, positioned adjacent to footpath or where vehicle parking occurs place signs in the parking lane or elevated on posts. They must be positioned so that they are in clear view of passing motorists
- All signage must be in accordance with RMS - Sign Design
- All portable traffic signals must be manned by qualified traffic controllers

Note:
Existing Signage To Be Covered Whilst Short Term Works Are Being Undertaken.

TC to test and observe sign location considering road conditions.

Traffic hold points, Sign Location to be adjusted if required.

Signs to be repeated where sight lines restricted by road conditions.

Traffic Controllers to monitor queue lengths

TCs to Assist in providing Safe local vehicle access.

TC to escort Pedestrians safely past work site

Cyclists to be asked to dismount and use pedestrian path

Pedestrians will be diverted via existing crossings or driveway crossovers

The safety and convenience of pedestrians requires paths and crossings locations to be maintained in an acceptable and hazard free condition at all times of the shift. Ensure pedestrian diversions are erected at an existing crossing or area with sufficient ramping to assist pedestrians with impairments.

	Date Revised:	Description of Revision:
	Rev 1:	
	Rev 2:	
	Rev 3:	
Rev 4:		
Client:	LAING O'ROURKE	
Location:	PARK ST CRANE WORKS ERSKINEVILLE STATION	
Description:	STOP/SLOW ROAD CLOSURE	
Plan Number:	2021-2218	
Date Drawn:	30/09/2021	
Plan Drafted By:	Rodney Popovic	Checked By: Corey Bolton
Prepare Work Zone TMP:	TCT 0063315	Prepare Work Zone TMP: 0051913779

- REQUIREMENTS:**
- 7 X TRAFFIC CONTROLLERS
 - 2 X TRAFFIC CONTROLL UTES